

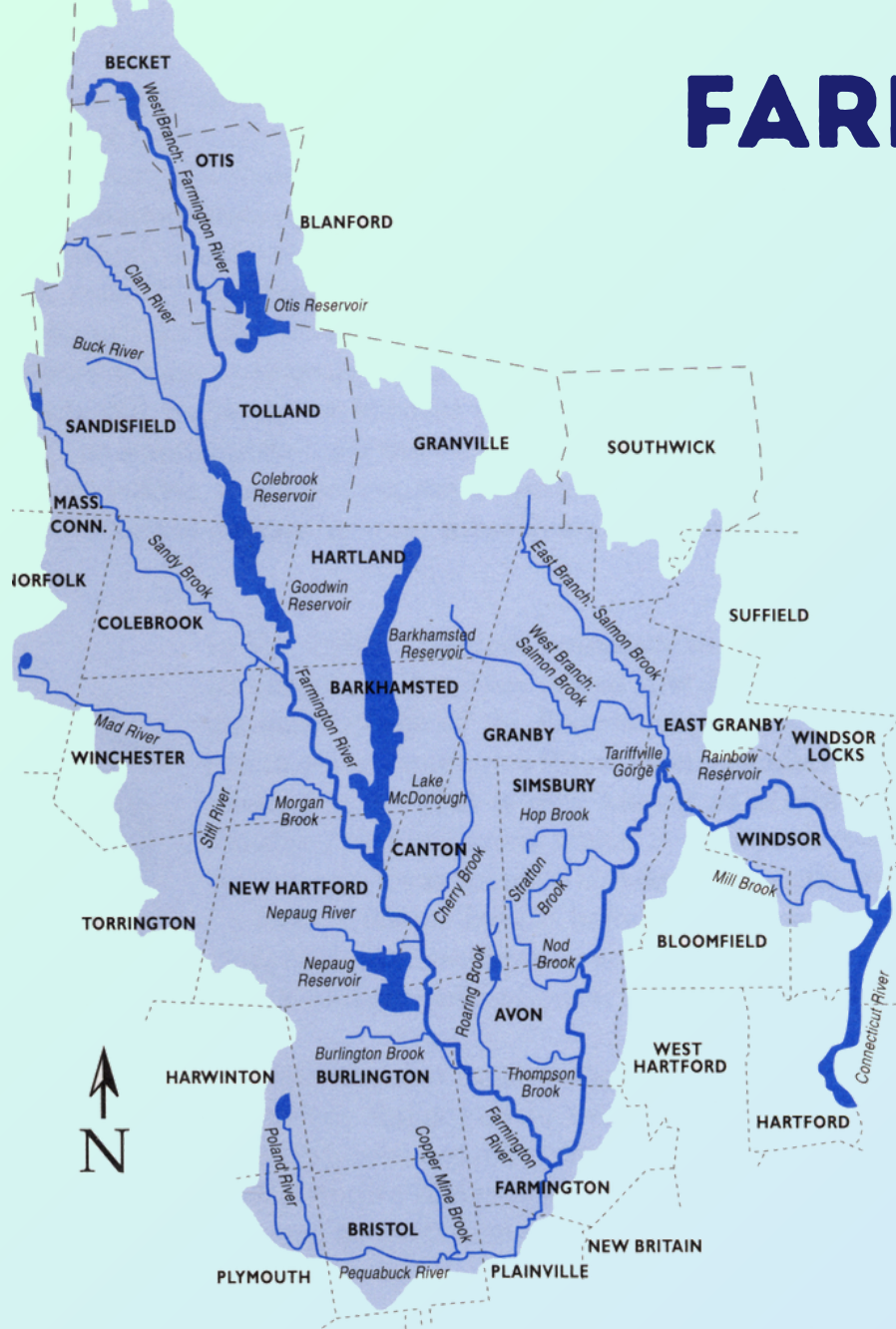
# FARMINGTON RIVER WATERSHED




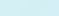
33 TOWNS

609 SQUARE MILES

2 WILD & SCENIC  
DESIGNATIONS

78.6 PROTECTED MILES



-  Farmington River Watershed
-  Water
-  Connecticut Town Boundaries
-  Massachusetts Town Boundaries



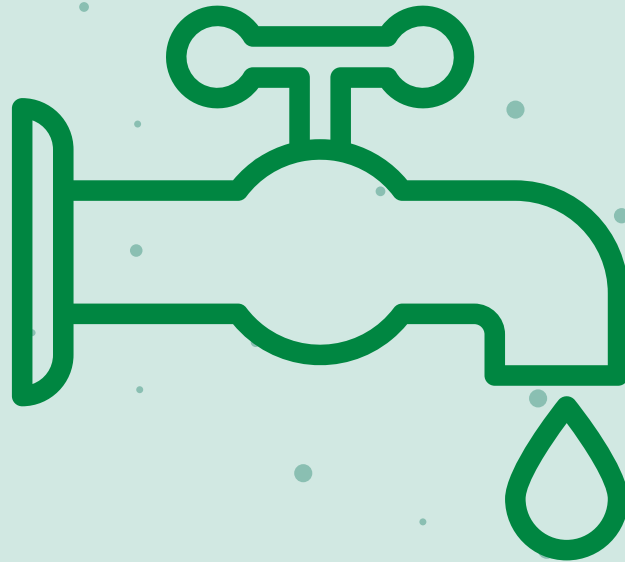
**BE RIVER SMART**



**IN THE HOME**



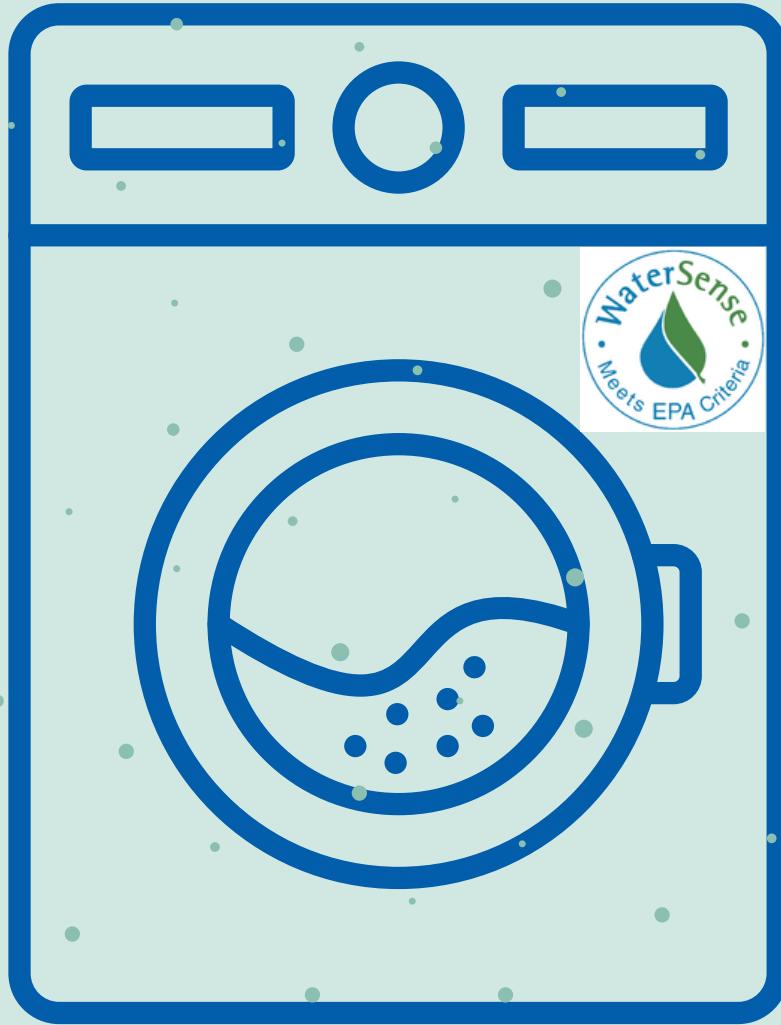
**RIVER SMART**



**CHECK FOR LEAKY TAPS**



# RIVER SMART



LOOK FOR THE LABEL



# RIVER SMART



DISPOSE OF MEDICATION



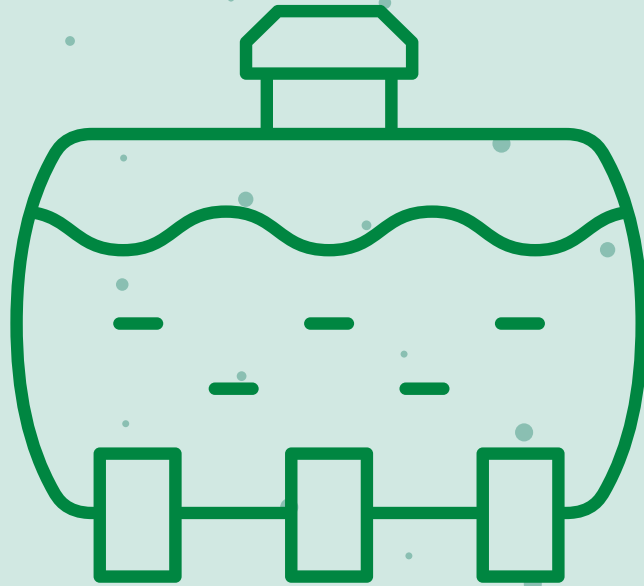
**BE RIVER SMART**



**OUTSIDE IN THE YARD**



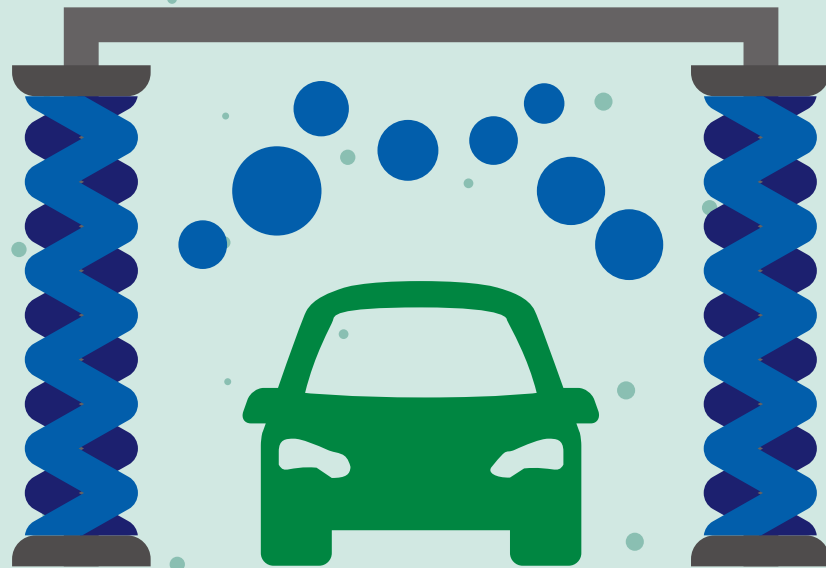
**RIVER SMART**



**CHECK YOUR SEPTIC**



**RIVER SMART**



**USE THE CAR WASH**





# RIVER SMART



DISPOSE OF PET WASTE



**RIVER SMART**

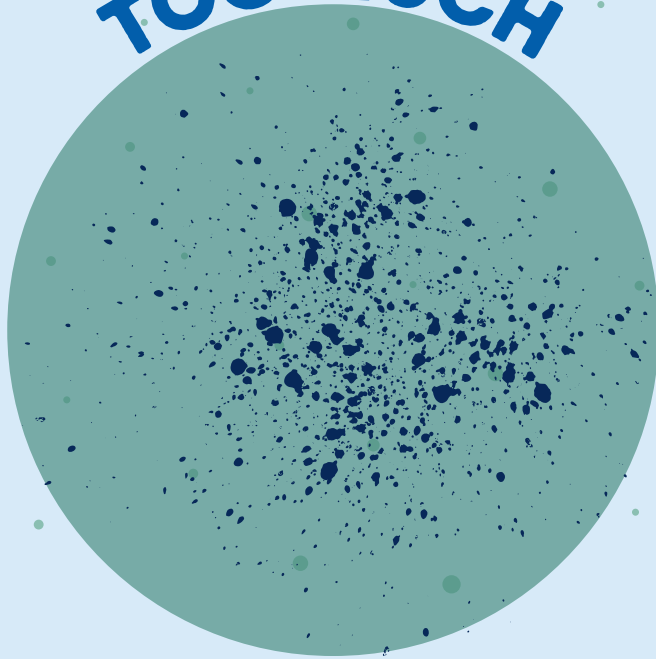


**SMART SALTING**

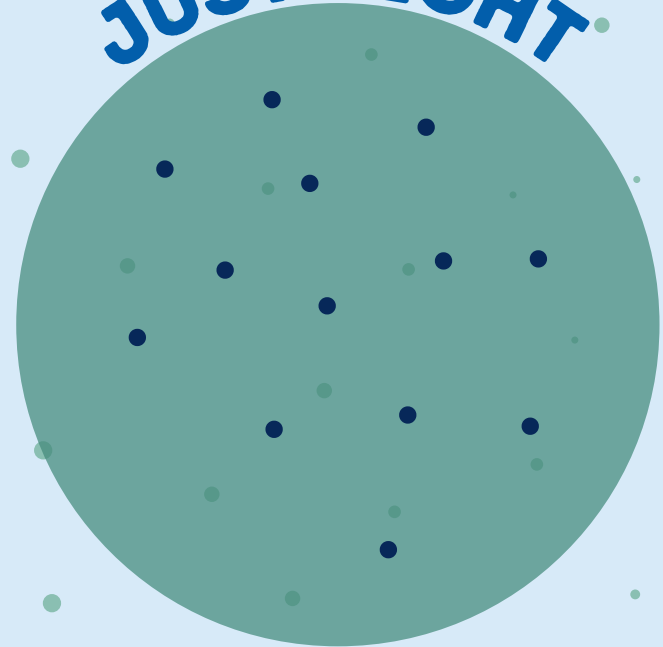
# HOW TO APPLY

SCATTER YOUR SALT SO THERE'S  
SPACE BETWEEN GRAINS -  
LIKE STARS IN THE SKY!

TOO MUCH



JUST RIGHT



# RIVER SMART



REDUCE FERTILIZER USE



# RIVER SMART



## REDUCE LAWN SIZE

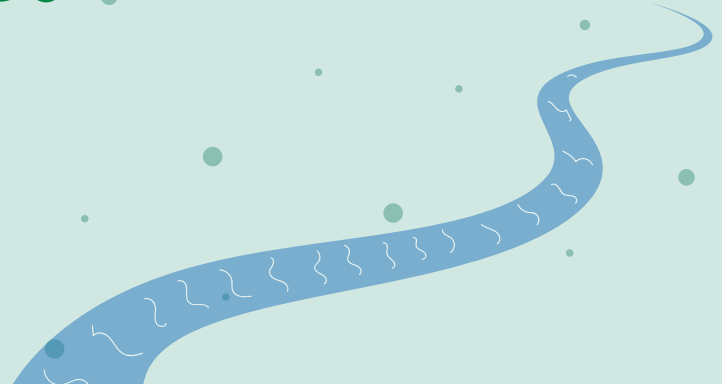


# 'MOW HIGH AND LET IT LIE'

LETTING YOUR GRASS GROW  
TALLER ALLOWS THE ROOTS TO  
GROW DEEPER

LEAVE YOUR GRASS  
CLIPPINGS AS A NATURAL  
FERTILIZER

THIS WILL HELP TO IMPROVE YOUR  
LAWNS ABILITY TO ABSORB WATER,  
STABILIZE SOIL, AND CONTROL WEEDS



**RIVER SMART**



**LIMIT PAVED AREAS**



# RIVER SMART



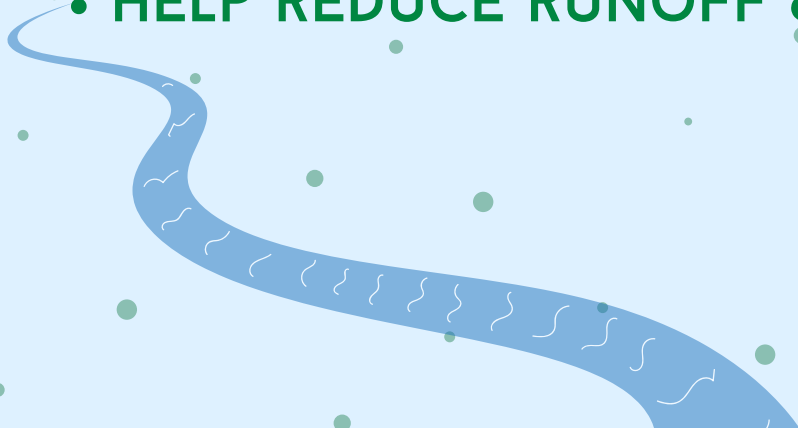
# NURTURE NATIVE PLANTS





# BENEFITS OF PLANTING NATIVES

- SAVE WATER
- NO NEED FOR FERTILIZERS
- NO NEED FOR PESTICIDES
- RESISTANT TO LOCAL WEATHER
- PROVIDE FOOD AND SHELTER TO WILDLIFE
- RARELY OUTCOMPETE OTHER PLANTS
- BENEFICIAL FOR EROSION CONTROL
- RESTORE NATURAL HABITAT
- HELP REDUCE RUNOFF & FLOODING



# RIVER SMART



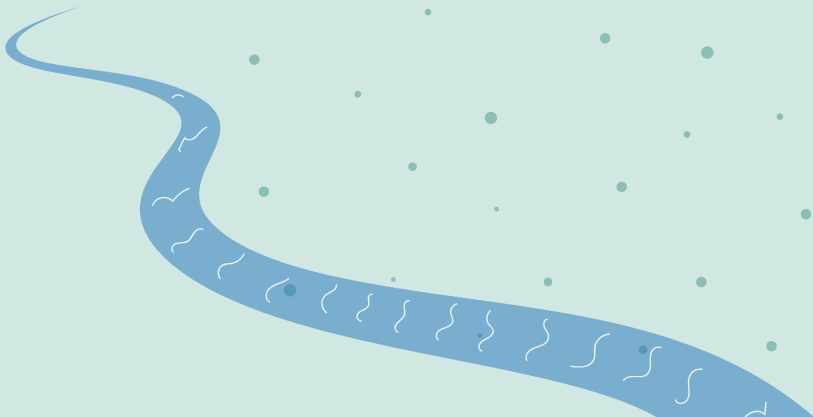
# PLANT NATURAL BUFFERS



# WHAT ARE BUFFERS

A BUFFER IS A STRETCH OF TREES, SHRUBS, AND GROWDCOVER INTENTIONALLY PLANTED TO PROTECT AGAINST POLLUTION AND EROSION

THEY ARE TYPICALLY PLANTED ALONG STREAMBANKS TO STRENGTHEN THE BANK AND CATCH ANY SEDIMENTS OR POLLUTANTS MAKING THEIR WAY IN WITH STORMWATER RUNOFF



# HOW BUFFERS WORK

THE CANOPY FORMED BY TREES AND SHRUBS INTERCEPTS RAINFALL, REDUCING ITS IMPACT ON SOIL

THE LEAVES COLLECT RAIN, WHICH ALLOWS FOR BETTER EVAPORATION RATES

LOW GROWING PLANTS FILTER OUT SEDIMENTS AND POLLUTANTS FROM RUNOFF

DEEP ROOTS HOLD THE SOIL IN PLACE AND ABSORB WATER AND NUTRIENTS

UNEVEN SOIL ALLOWS FOR WATER TO PUDDLE AND SOAK INTO THE GROUND



# HOW BUFFERS WORK

## EROSION CONTROL

- ROOTS AND STEMS STABILIZE STREAMBANKS
- REDUCES VELOCITY OF FLOWING WATER

## FISH & WILDLIFE HABITAT

- LEAVES, BRANCHES, AND FRUIT ARE MAJOR FOOD SOURCES AND SHELTER FOR WILDLIFE
- MODERATES WATER TEMP IN STREAMS
- HABITAT FOR:
  - FISH, BIRDS, MAMMALS, AMPHIBIANS

## WATER QUALITY PROTECTION

- FILTER NUTRIENTS, SEDIMENTS, AND CONTAMINANTS
- REGULATES WATER TEMPERATURE IN SUMMER
  - TEMP INCREASE -> OXYGEN DECREASE
- DISCOURAGES DUCKS AND CANADIAN GEESE
  - CAN NEGATIVELY IMPACT STREAM HEALTH

# LOOKING FOR MORE RIVER SMART?

GO TO [FRWA.ORG](http://FRWA.ORG) AND HEAD TO OUR RESOURCES PAGE, WHERE YOU CAN FIND ALL OF OUR RIVER SMART MATERIALS



OR

HEAD TO [RIVERSMARTCT.ORG](http://RIVERSMARTCT.ORG) AND CHECK OUT THEIR RESOURCES PAGE FOR MORE INFORMATION

